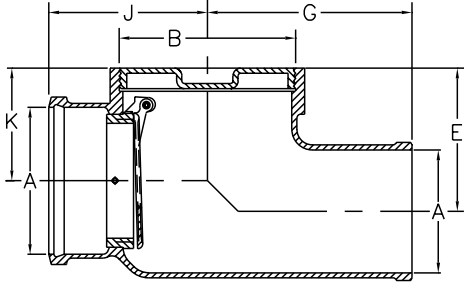


Z1095 BACKWATER VALVE FLAPPER TYPE



ENGINEERING SPECIFICATION

Zurn Z1095 backwater valve features Dura-Coated cast iron body, hub inlet and offset spigot outlet, bronze threaded cover, and automatic PVC (3" and 4" sizes only) flapper type backwater valve with O-ring.



PREFIXES	DESCRIPTION	PRODUCT DESIG.	PIPE SIZE/OUTLET TYPE	LIST PRICE
Z1095*	D.C.C.I. Body with Hub x Spigot Connection Type	-2	2HB x 2SP	1,298.00
		-3	3HB x 3SP	2,027.00
		-4	4HB x 4SP	2,501.00
		-6	6HB x 6SP	3,596.00
		-8	8HB x 8SP	5,052.00
		-10	10HB x 10SP	8,246.00

SUFFIXES	PIPE SIZE	ADD
-BC	Bolted Cover	N/C
-BV	Bronze Flapper Valve (3" and 4" Size)	N/C
-G	Galvanized Cast Iron	
	2" thru 4"	527.00
	6"	876.00
8", 10"	1,568.00	

BEST SELLERS	LIST PRICE
Z1095-10HS	8,246.00
Z1095-6HS	3,596.00
Z1095-8HS	5,052.00

Product Designation	Dimensions in inches [mm]						Approximate Weight lb [kg]
	A Pipe Size	B	E	G	J	K	
-2	2 [51]	4 [102]	4-3/8 [111]	7 [178]	5 [127]	2-7/8 [73]	23 [10]
-3	3 [76]	5 [127]	5-1/8 [130]	8 [203]	6 [152]	3-5/8 [92]	30 [14]
-4	4 [102]	6 [152]	5-5/8 [143]	8-1/2 [216]	6-3/4 [171]	4-1/8 [105]	34 [15]
-6	6 [152]	8 [203]	6 [152]	10 [254]	7-3/4 [197]	4-1/2 [114]	57 [26]
-8	8 [203]	10 [254]	7-1/2 [191]	11-7/8 [302]	9-3/8 [238]	6 [152]	79 [36]
-10	10 [254]	12 [305]		12-3/4 [324]	10-7/8 [276]	7 [178]	102 [46]

Supplied By:



877-903-7246

www.commercialplumbingsupply.com

*Regularly furnished unless otherwise specified.

Items designated as Best Sellers are most specified and are generally in stock for shipment.

⌚ This symbol denotes a product that is engineered to reduce installation and rework time.

For additional product information, please visit www.zurn.com

INTRO
ROOF DRAINS
FLOOR DRAINS
T, P, BW VALVES
INTERCEPTORS
CARRIERS
HYDRANTS
CLEANOUTS
W/HA
SS DRAINS
FAB SS DRAINS
SANI-FLO
TECH INFO